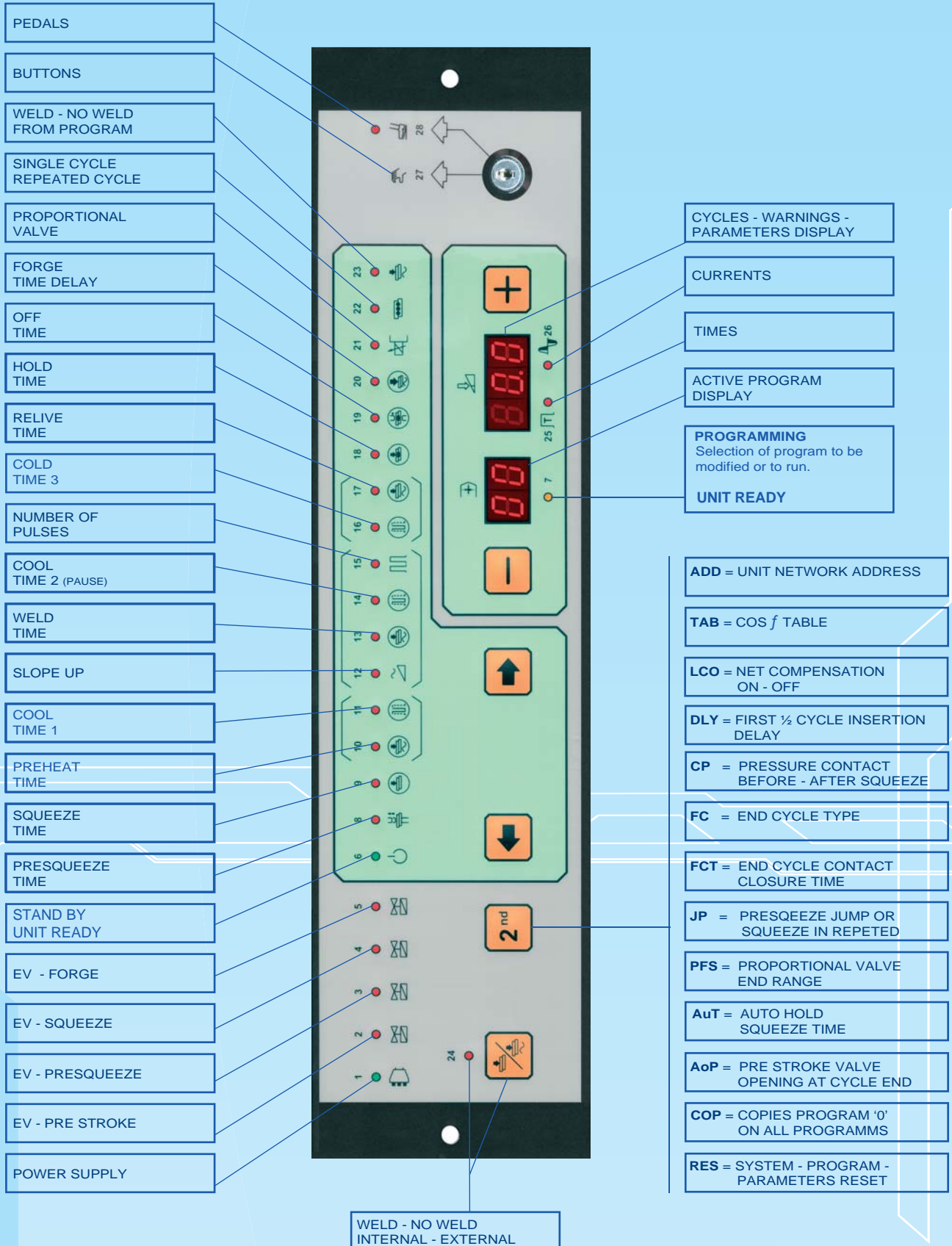


CS-290P



CS-290P

SAFCO Systems s.r.l.

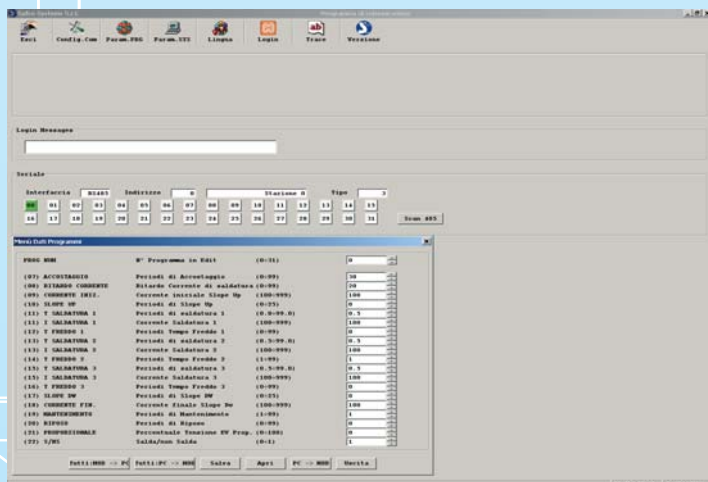
Via Isonzo, 17/b - 20090 Cesano Boscone (MI) - ITALY

Phone +39 02 4504433 - +39 02 4504435

Fax +39 02 4504321

E-mail: info@safcosys.it

Web Site: www.safcosys.it



Main Features:

- Synchronous control for SCR with phase cut off welding current regulation.
 - Working cycle specially designed for Spot welding machines.
 - Three different hot cycles: preheating, welding, post heating.
- Welding time setting: up to 10 with a resolution of ½ period; above 10 with a resolution of 1 period.
 - Welding current setting in thousands of half wave phase cut off.
 - All outlets and inlets are galvanic insulated.
- Setting and running capability of 32 programs selected from internal or external.
- Copy function to overwrite automatically the program 0 on all other programs.
- Line voltage compensation with activation/deactivation by system parameter.
 - Network serial interface RS485.
- Start cycle with concomitance (Dual inlet) or via foot switch.
 - First insertion delay setting with a system parameter.
 - Separate proportional valve outlet galvanic insulated.
- Setting of the proportional valve full range (100%) from 5 to 10 volt with a system parameter.
- Three different Cycle Ends with correspondent time setting by system parameters.
- 16 current tables for different machine's power factor.
- Pre stroke solenoid valve acting as pre stroke with manual opening or opening at cycle end selectable with a system parameter.
- Automatic power line frequency recognition.
 - Dedicated signals for PLC drive.
 - Fully adjustable from a PC program.
- Interchangeable with previous versions (IP3/S 1208 - IP3/S 1250).

